

# LeTourneau PCM-120SS

## Solid-State Marine Pedestal Crane

**F**aster hook speed in a reliable LeTourneau crane:

The LeTourneau PCM-120SS pedestal crane with solid-state controls responds faster and combines proven LeTourneau performance with solid-state electronic efficiency. There's less downtime for maintenance and lower operating costs. The PCM-120SS is the ideal crane for offshore cargo handling operations.

### SPECIFICATIONS

DATA	U.S.	METRIC
<b>Hoisting SWL</b>	100,000 lbs.	45,360 kg

#### Hoist Speed (Bare Drum Single Line Speed)\*

Loaded	0-240 fpm	0-1.22 m/s
Empty	0-360 fpm	0-1.83 m/s

\* Line speeds are for raising motion; lowering takes place at 240 FPM (1.22 m/s) maximum speed.

#### Luffing Speed (100-foot boom)

Maximum to minimum reach (boom lift):  
loaded/full speed – 60 seconds

#### Swing Speed

Right or left	0-2 rpm
---------------	---------

#### Dimensions

Boom length (standard)	100 ft.	30.48 m
Boom length (minimum)	60 ft.	18.29 m
Boom length (maximum)	120 ft.	36.58 m
Overall width	16 ft. 8 in.	5.08 m
Overall tail swing	13 ft.	3.96 m
Pedestal column size (O.D.)	48 in.	1.22 m

#### Electrical Power Requirements

Standard commercial 600 volt, 60 Hertz, 3 phase, 600 ampere external supply. Solid-state S.C.R. converters provide DC power and regenerative braking to each drive system. Peak power requirement (maximum load, dual-function, 20-minute duty) is 550 KVA.

<b>Operating Weight</b>	114,000 lbs.	51,710 kg
-------------------------	--------------	-----------

#### Drive System

N-9 DC electric motors and N3T gear reducers for hoist and luffing. S-1A DC electric motor and #5 gearbox for swing.



**LeTourneau, Inc.**  
**Marine Group**

Built on Experience. Driven by Vision.

## Solid-state controls mean faster response.

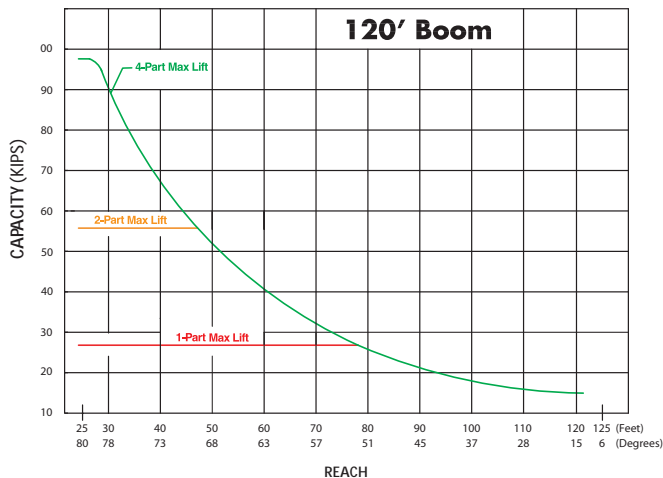
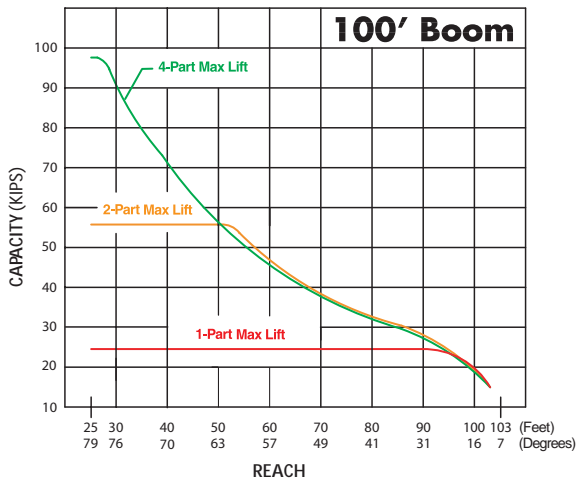
Solid-state electronics are the heart of this new crane's control system. Hoisting, luffing and swinging are all regulated using state-of-the-art electronics technology.

With solid-state controls, you get quicker response to operator commands. That means faster loading and hoisting.

And the proven reliability of solid-state components means your LeTourneau crane will be on the job longer because there will be less maintenance. There are fewer

moving parts to repair or replace. Plus the PCM-120SS has a built-in diagnostic system that makes maintenance simpler.

The PCM-120SS has a single AC power source. Solid-state electronics control power flow to the drive motors. Each motor is individually controlled and all motions can be operated simultaneously (when equipped with and optional auxiliary hoist, a selection must be made for either main or auxiliary hoist). And motor speeds, current, voltage and temperature for each motor are monitored for increased safety and operating efficiency.



### Notes:

**Safe Working Load (SWL) = Load which may be carried below the hook.**  
**API Static Rated Load = SWL plus 2000 lb hook block.**

LeTourneau has made every effort to make these specifications as accurate as possible at the time of printing. However, we reserve the right to make changes and improvements at any time without notice in equipment, materials and specifications. To ensure the most current information, please contact your LeTourneau Marine representative.

## FEATURES

### Brakes

Regenerative electrical braking while lowering load plus disc "fail-safe" holding brakes. Disc brakes are applied automatically with delay when a particular crane function is stopped. Brakes are applied instantly in the event of power supply interruption.

### Swing

3 full revolutions between limits (1.5 revolutions right and left).

### Superstructure mounting

Revolving crane supported by kingpost structure of proven reliable design. Kingpost provides greater assurance against disengagement from pedestal.

### Standard equipment and features

- 4-part line hook block
- Enclosed machinery house
- Remote control station with 100-foot cable pendant
- Grooved hoist and boom luffing drums
- Solid-state monitoring and control of drive systems
- Built-in diagnostic system for simpler maintenance
- Limit switches control maximum boom position
- Electronic load-moment computer
- Hoist-up (anti-two-block) limit switch
- High-temperature and failure indicator lights at operator station
- Emergency hook lowering feature

### Optional equipment

- Pedestal column
- Control cab (remote or crane mounted) with ventilation heater, defroster and windshield wiper
- 10-ton (9,000 kg) auxiliary hoist assembly DC powered (see hoist speed)
- Boom Extension Kit: 20-foot (6.10 m)
- Boom Extension Kit: 40-foot (12.19 m)
- Constant tension aux. hoist line payout system
- Automatic gross overload protection
- Fire and gas shutdown system
- Tool kit

### Classification

- ABS Crane Registry Certificate
- Complies with API Spec 2C, 5th Ed, 1995
- DNV/NPD - optional (Model PCM-120SS/N)



**LeTourneau, Inc.**

P.O. Box 2307 • Longview, Texas 75606  
 Telephone: (903) 237-7500 • FAX (903) 237-7569  
 www.letourneau-inc.com