

JIB CRANE SPECIFICATIONS

JC-40



JC-40 Jib Crane

Standard Boom Length: 120' (36.58 m) Lift Capacity: 40,000 lbs. (18,144 kgs)

Optional Boom Length: 100' (30.48 m) Lift Capacity: 52,000 lbs. (23,587 kgs)

Optional Boom Length: 150' (45.72 m) Lift Capacity: 25,000 lbs. (11,340 kgs)

Note: Optional equipment may be shown in photo.

LeTourneau

FORESTRY
PRODUCTS

Built on Experience. Driven by Vision.



SPECIFICATIONS

OPERATING CAPACITY

Gross	40,000 lbs.	(18,144 kgs.)
Optional:		
100 ft. boom	52,000 lbs.	(23,587 kgs.)
150 ft. boom	25,000 lbs.	(11,340 kgs.)

HOIST SPEED

Empty-up	0-120 FPM	(0-36 mpm)
Empty-Down	0-110 FPM	(0-33 mpm)
Loaded-up	0-110 FPM	(0-33 mpm)
Loaded-Down	0-120 FPM	(0-36 mpm)

TROLLEY SPEED

Standard	0-175 FPM	(0-53 mpm)
----------	-----------	------------

SWING SPEED

RPM	1
-----	---

BOOM

Standard	120 ft.	(36.58 m)
Optional:	100 ft.	(30.48 m)
Optional:	150 ft.	(45.72 m)

GRAPPLE SIZE

Typical	20 sq. ft.	(1.86 m)
Horsepower	40 HP	(39 KW)
Weight	9,500 lbs.	(4,309 kgs.)

TROLLEY TRAVEL

Standard	100 ft.	(30.48 m)
----------	---------	-----------

STORAGE CAPACITY- CORDS

Tree Length Circles	6-12,000
Cut to Length Rows	6-16,000

ELECTRICAL

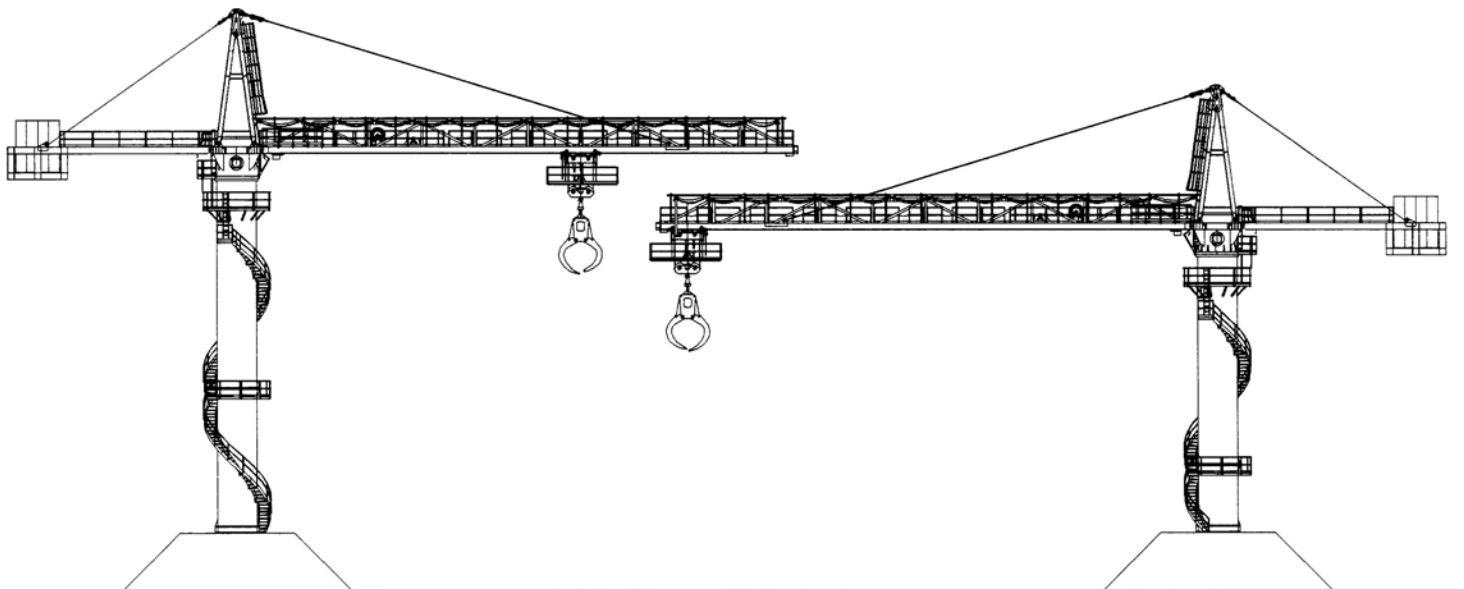
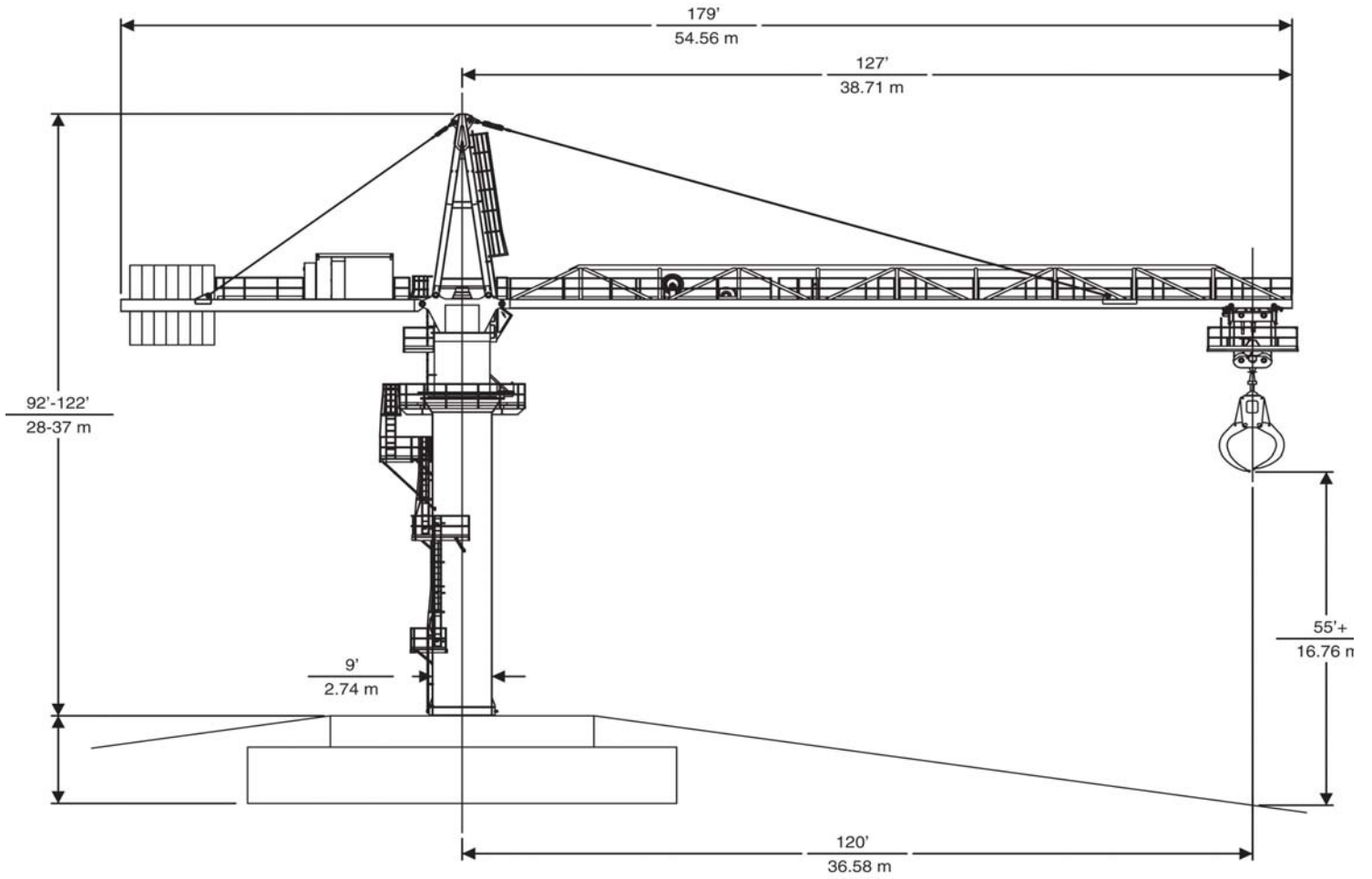
Hoist Motor	150 HP (DC)
Trolley Motor	50 HP (DC)
Swing Motor	50 HP (DC)
Grapple Pump Motor	40 HP (AC)
Total Connected Horsepower	290 HP
Electrical Service	3-phase, 60 Hz, 480 VAC
Lights	500 W Quartz

STANDARD CONFIGURATION

	STANDARD HEIGHT		OPTIONAL HEIGHT	
Overall Length (with 120' Boom)	179'	(54.56 m)	179'	(54.56 m)
Overall Height				
(above Foundation Stub) Approximately	92'	(28.04 m)	118'	(35.97 m)
Main Boom Length	120'	(36.58 m)	120'	(36.58 m)
Tail Swing (from Column Centerline)	52'	(15.85 m)	52'	(15.85 m)
Column Diameter	9'	(2.74 m)	9'	(2.74 m)



STANDARD DIMENSIONS





STANDARD EQUIPMENT

STRUCTURAL

120' Boom (36.58 m), 40,000 lbs. (18,144 kgs.) Lift
 9' (2.74 m) Diameter Column
 Lower Column Group, 67'
 Ladders with Cage on Column
 Walkways with Handrails for Front and Rear Booms
 I Beam Structure on A Frame with Wiring to accept Hoist Unit
 Lube System 120' Boom
 Basket Structure / Power Cable
 A Frame Access Ladder - 20'

OPERATOR'S CAB

Cab with Tinted Glass
 Cab Heater - Electric
 Sun Visors
 Swivel Operator's Console
 Two Windshield Wipers
 Sound Powered Headset and Phone Jacks

TROLLEY GROUP

Trolley Assy Group
 # 3 Trolley Drive Gearbox
 S1 - DC Trolley Drive Motor

HOIST GROUP

L-DC Motor Hoist (0 - 110 FPM)
 N3 Driver Hoist Gear Unit
 Cable Group, 7/8" Hoist
 Service Hoist Installation

SWING GROUP

Swing Table Group
 S1 - DC Swing Drive Motor
 # 5 Swing Drive Gearbox
 Grease Gutter under Swing Gear

ELECTRICAL

Electrical Control House on Rear Boom
 Electric Control Group
 Electric Wiring Group
 400 Amp Slip Ring
 Control System Group / Motor
 Instruments and Switches Group



STANDARD EQUIPMENT (CONTINUED)

LIGHTS / ALARMS

Three (3) 500W Quartz Halogen Work Lights
 Krueger High Wind Alarm
 Overload System, Audible and Visual Alarms
 Aircraft Warning Light

GENERAL

Hydraulic Brake Pump
 Hydraulic Brakes with Watchdog Electronics and Siren for Hoist
 Side Thrust Roller Auto Lube System
 Paint Group / Enamel, LeTourneau Yellow

OPTIONAL EQUIPMENT

Air Compressor Group
 Anchor Bolt Ring (Ship Loose)
 Anti - Collision System
 Anti - Condensation Heater - Control House
 Battery Powered Emergency Lights (Indoor)
 Battery Powered Emergency Lights (Outdoor)
 Boom Group, 100' (30.48 m), 52,000 lbs. (23,587 kgs.) lift
 Boom Group, 150' (45.72 m), 25,000 lbs. (11,340 kgs.) lift
 Custom Walkways and Handrails
 Electrical Outlet Strips - Six (6) Outlets
 Elevator for Access
 Epoxy Paint to Customer Specifications
 Gaitronic Public Address and Phone Group
 Grapples to fit Application
 High Pressure Sodium Lights - 1,000 Watts (in lieu of Standard Lights)
 Inside Handrail - Spiral Stair
 Level Switch Kit
 Ladder Jack Bolt Access Structure
 Main Boom Monorail Structure
 Roof Mounted Air Conditioner Unit
 Service Hoist
 Spiral Stair - Column - Galvanized Grating
 Spiral Stair, Middle Column (1-1/4 X 3/16) (89' Column)
 Spiral Stair, Base Column (89' Column)
 Template Structure (No Installation)
 Trolley Access Platform
 Trolley Access Platform with Galvanized Grating
 Welding Receptacle / 60 Amp
 Wiring for TV Cameras and Monitors

LeTourneau Technologies, America, Inc. has made every effort to make these specifications as accurate as possible at the time of printing. However, we reserve the right to make changes and improvements in equipment, materials, and specifications at any time without notice. To insure the most current information, please contact your LeTourneau Representative.



Troutdale, OR
 1-503-669-1276
 Lakewood, WA
 1-253-588-1726
 Redding, CA
 1-530-365-0175

Coeur d' Alene, ID
 1-208-765-4989
 Prince George, BC
 1-250-649-0679
 Fax: 1-503-666-6681
 E-mail: letourneautechnologies.com



JC-40 JIB CRANE



LeTourneau

FORESTRY
PRODUCTS

Built on Experience. Driven by Vision.