

JIB CRANE SPECIFICATIONS

JC-40



JC-40 JIB CRANE

40,000 lbs (18,144 kgs)
Standard Operating Capacity



LeTourneau
TECHNOLOGIES™

FORESTRY
PRODUCTS

Note: Optional equipment shown in photo.



OPERATING CAPACITY

Gross 40,000 lbs. (18,144 kgs.)



HOIST SPEED

Empty-Up	0-100 FPM (0-30 mpm)
Empty-Down	0-100 FPM (0-30 mpm)
Loaded-Up	0-100 FPM (0-30 mpm)
Loaded-Down	0-100 FPM (0-30 mpm)



TROLLEY SPEED

Standard 0-175 FPM (0-53 mpm)



SWING SPEED

RPM 1



BOOM

Standard	120 ft. (36.58 m)
Optional	*100 ft. (30.48 m)
Optional	**150 ft. (47.72 m)

* 100 ft. boom-52,000 lb. capacity available

** 150 ft. boom-25,000 lb. capacity



STANDARD CONFIGURATION

STANDARD HEIGHT

OPTIONAL HEIGHT

Overall Length (with 120' Boom)	179' (54.56 m)	179' (54.56 m)
Overall Height (above Foundation Stub) Approximately:	92' (28.04m)	118' (35.97 m) Maximum
Main Boom Length	120' (36.58 m)	120' (36.58 m)
Tail Swing (from Column Centerline)	52' (15.85 m)	52' (15.85 m)
Column Diameter	9' (2.74 m)	9' (2.74 m)



GRAPPLE SIZE

Typical	20 sq. ft. (1.86 m ²)
Horsepower	40 HP (39 kW)
Weight	9,500 lbs. (4,309 kgs.)



TROLLEY TRAVEL

Standard 100 ft. (30.48 m)



STORAGE CAPACITY-CORDS

Tree Length Cords	6-12,000
Cut to Length Rows	6-16,000

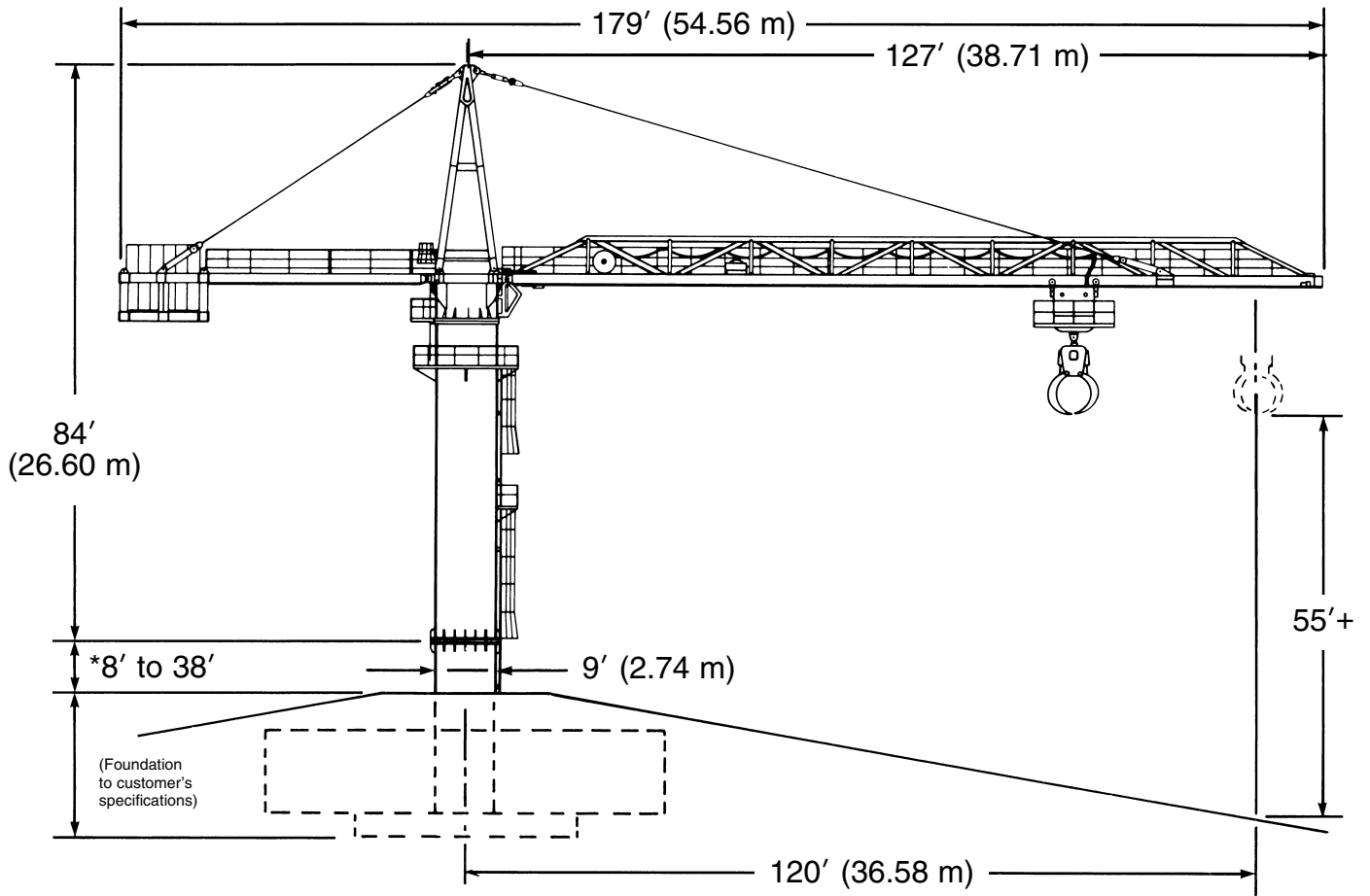


ELECTRICAL

Hoist Motor	150 HP (DC)
Trolley Motor	50 HP (DC)
Swing Motor	50 HP (DC)
Grapple Pump Motor	40 HP (AC)
Total Connected Horsepower	290 HP
Electrical Service	3-phase, 60 Hz, 480 VAC
Lights	500 W, Quarts



STANDARD DIMENSIONS



*Stub column length to customer's specifications.

